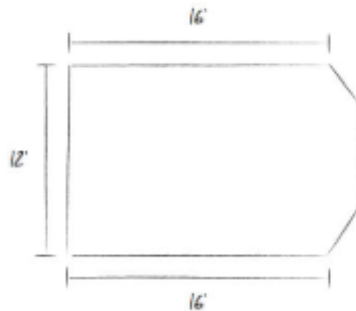


How to Measure Your Room

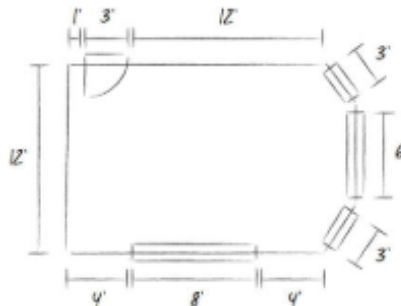
1. Draw the general shape of the room from a bird's eye view



2. Add the basics: Measure each wall corner to corner to give overall length.



3. Add the details: On each wall add each door, window, and opening with the measurements.



4. Don't forget to add other important detail measurements:

- * Ceiling height
- * Outlet location
- * Radiator or floor vent placement and dimensions.
- * Column location
- * Fireplace measurements, Length, Depth and Height. Also include height from mantle to ceiling or molding.
- * If you prefer inside mounted shades include interior casing measurements for windows.
- * Other details such as bulkheads, bay windows, stairs, wainscoting, etc.

If you are using existing furniture be sure to include measurements of those items as well.